

# EPSON®



## LW-PX400

**Solid • Trusted • Connected**



**4-24mm**



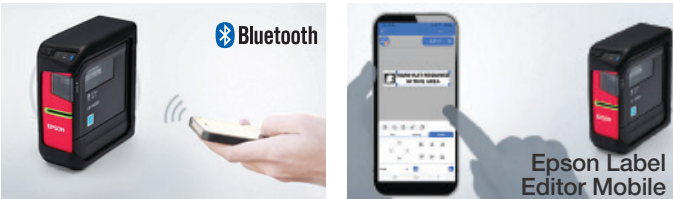
LW-PX400



The LW-PX400 is a portable, wireless industrial labeling and wire marking printer with a lifetime warranty. Whether you are a datacom installer, an electrician, or need a compact industrial labeling solution, the LW-PX400 is a convenient way to label.

The smallest, lightest, and most flexible 1" (24mm) printer on the market, the LW-PX400 can work wirelessly in the field via Bluetooth® using either an iOS™ or Android™ mobile device, or a Windows PC with Label Editor software (downloads and licenses included). Create professional visual identification with durable adhesive supplies, and mark wires/cables with self-laminating wraps and heat shrink tubing.

MOBILE APP ENABLED



Connecting to Label Editor Mobile is easy peasy! Simply activate your bluetooth, select LW-PX400 from the drop-down menu, then select your printer from the Bluetooth Menu in Label Editor Mobile, and begin creating your labels!

POWERFUL DESIGN SOFTWARE

LW-PX400 is driven by Label Editor Software (PC), Label Editor Lite (Mac), and the Label Editor Mobile App. These applications make for a powerful little printer!

LIFETIME WARRANTY



Register your printer with us when you receive it, and you're covered for as long as you own it. **100% Covered. Always. You break it. We replace it. For life.**

And this warranty isn't some add-on service plan available at an additional cost. Instead, your warranty comes with your printer, so you'll never have to worry about life if it happens to your printer.

MULTIPLE USER CAPABILITIES



Multiple labelers in your office? No problem. LW-PX400 has the capability to connect to multiple users, so that everyone on your team can label with ease.

LARGE BATCH LABELING



Large batch labeling? Connect LW-PX400 to either Epson's Label Editor Software or Label Editor Mobile App to print labels directly from a spreadsheet. Press print once to print labels in random order, sequenced, with icons or images - the possibilities are endless.

SCANNABLE LABELS



Bar Codes and QR Codes are easy and efficient using Label Editor Software, Label Editor Lite (Mac) or the Label Editor Mobile app!

AVAILABLE KITS



SKU: LW-PX400

- Kit Includes:**
- LW-PX400 Printer
  - ½" (12mm) Black on White VINYL Cartridge (212VTBWPX)
  - AC Adapter
  - USB Cable
  - Rubber Guard
  - FREE Label Editor Software and App Downloads (Unlimited Licenses)

SPECIFICATIONS

PRINTER

**Technology:** Thermal Transfer  
**Tape Width:** 1/6" - 1" (4-24mm)  
**Heat Shrink Tube Width:** 1/8" - 9/16" (3-14mm)  
**Resolution:** 180dpi  
**Printer Head Width:** 18.1mm  
**Max Print Speed:** 15mm/sec (with AC Adapter)

HARDWARE

**Cutter:** Automatic with full-cut  
**Replaceable Cutter:** N/A  
**LCD:** N/A  
**Keyboard:** N/A  
**Internal Memory:** N/A  
**Drop-Stop & Pick-n-print:** N/A  
**Detection:** Cover open, battery level, tape detection (type and size), tape end, bluetooth connectivity

CONNECTIVITY

**Interface:** USB, Bluetooth  
**Compatible PC Software:** Epson Label Editor  
**Compatible Mac Software:** Epson Label Editor Lite  
**Compatible Apps (iOS 9.0 or later Android 5.0 or later):** Epson Label Editor Mobile, Epson iLabel, Epson Datacom

POWER INFORMATION

**AC Adapter:** Yes  
**Battery:** 6 AA Batteries (batteries not included)

PRINTER SETTINGS & FEATURES

**Repeat Printing:** Yes\*  
**Auto Increment:** Yes\*  
**Number Serialization:** Yes\*  
**Label Transfer from PC Software:** N/A  
**Store and Print Images:** N/A  
**Mirror Printing:** Yes\*  
**Mix-Length:** Yes\*  
**Peel Guard Corner Rounder:** N/A  
**Minimum Margins:** 10mm lead, 1mm between labels  
**Vertical Printing:** Yes\*  
**Cable Wrap:** Yes\*  
**Flag:** Yes\*  
**Patch Panel:** Yes\*  
**Punch Block:** Yes\*  
**Faceplate:** Yes\*  
**Block 66:** Yes\*  
**Barcodes:** Yes\*  
**QR Code:** Yes\*  
**Symbols:** Yes\*  
**Length:** Auto or custom  
**# of Fonts:** Dependant on Software or Apps\*  
**Frames:** Yes\*  
**Table:** Yes\*  
**Frames:** Yes\*

\*From PC Software and Apps

See next page for tape compatibility >  
Check LabelWorks.Epson.com for product updates, information, and current pricing





TAPE COMPATIBILITY: LW-PX400

STANDARD INDUSTRIAL POLYESTER TAPE - 30ft (9m)			
IMPRINT	TAPE	WIDTH	PART NUMBER
Black	Clear	1/4" (6mm)	206BCPX†
		3/8" (9mm)	209BCPX†
		1/2" (12mm)	212BCPX†
		3/4" (18mm)	218BCPX†
		1" (24mm)	224BCPX†
	Translucent Matte (limited supply)	3/4" (18mm)	218BTMPX
	White	1/6" (4mm)	204BWPX
		1/4" (6mm)	206BWPX†
		3/8" (9mm)	209BWPX**†
		1/2" (12mm)	212BWPX**†
		3/4" (18mm)	218BWPX**†
		1" (24mm)	224BWPX**†
	Yellow	1/4" (6mm)	206BYPX†
		3/8" (9mm)	209BYPX**†
		1/2" (12mm)	212BYPX**†
		3/4" (18mm)	218BYPX**†
	Green	1" (24mm)	224BYPX**†
		1/4" (6mm)	206BGPX†
		3/8" (9mm)	209BGPX†
		1/2" (12mm)	212BGPX†
		3/4" (18mm)	218BGPX†
	Blue	1" (24mm)	224BGPX†
		1/4" (6mm)	206BBPX†
		3/8" (9mm)	209BBPX†
		1/2" (12mm)	212BBPX†
	Red	3/4" (18mm)	218BBPX†
		1" (24mm)	224BBPX†
		1/4" (6mm)	206BRPX†
		3/8" (9mm)	209BRPX†
	Orange	1/2" (12mm)	212BRPX†
		3/4" (18mm)	218BRPX†
		1" (24mm)	224BRPX†
		1/2" (12mm)	212BOPX
	White Removable	3/4" (18mm)	218BOPX
		1" (24mm)	224BOPX
	Purple	1/2" (12mm)	212RAPX†
	Matte Silver	3/4" (18mm)	218BVPX
		3/8" (9mm)	209SMPX†
		1/2" (12mm)	212SMPX†
		3/4" (18mm)	218SMPX†
		1" (24mm)	224SMPX†

STANDARD INDUSTRIAL POLYESTER TAPE - 30ft (9m)			
IMPRINT	TAPE	WIDTH	PART NUMBER
White	Black	1/4" (6mm)	206WBPX†
		3/8" (9mm)	209WBPX†
		1/2" (12mm)	212WBPX†
		3/4" (18mm)	218WBPX†
		1" (24mm)	224WBPX†
		1/2" (12mm)	212WRPX
	Vivid Red	3/4" (18mm)	218WRPX
		1" (24mm)	224WRPX
	Vivd Green	1/2" (12mm)	212WGPX
		3/4" (18mm)	218WGPX
		1" (24mm)	224WGPX
	Vivid Blue	1/2" (12mm)	212WLPX
		3/4" (18mm)	218WLPX
		1" (24mm)	224WLPX
	Clear	1/2" (12mm)	212WCPX†
		3/4" (18mm)	218WCPX†
		1" (24mm)	224WCPX†
Red	White	1/2" (12mm)	212RWPX†



FLUORESCENT POLYESTER TAPE - 30ft (9m)			
IMPRINT	TAPE	WIDTH	PART NUMBER
Black	Fluorescent Red	3/4" (18mm)	218FRPX
	Fluorescent Pink		218FPPX
	Fluorescent Orange		218FOPX†
	Fluorescent Yellow		218FYPX†
	Fluorescent Green		218FGPX†
STRONG ADHESIVE POLYESTER TAPE - 30ft (9m)			
Black	White	3/8" (9mm)	209IBWPX†
		1/2" (12mm)	212IBWPX†
		3/4" (18mm)	218IBWPX†
		1" (24mm)	224IBWPX†
	Yellow	3/8" (9mm)	209IBYPX†
		1/2" (12mm)	212IBYPX†
		3/4" (18mm)	218IBYPX†
		1" (24mm)	224IBYPX†
Gold	Clear	1/2" (12mm)	212GCPX†
	Black	1/2" (12mm)	212GBPX
VINYL TAPE - 22.9ft (7m)			
Black	White	1/2" (12mm)	212VTBWPX**
		3/4" (18mm)	218VTBWPX**
		1" (24mm)	224VTBWPX**
	Yellow	1/2" (12mm)	212VTBYPX**
		3/4" (18mm)	218VTBYPX**
		1" (24mm)	224VTBYPX**
VINYL SELF-LAMINATING OVERWRAP - 26.2ft (8m)			
Black	White	1" (24mm), 1/4" White, 3/4" Clear Tail	224VSLPX**†

Wire wrap tape prints on white area and has a clear tail to overlap printed material.

EXTRA TOUGH NYLON TAPE - 19ft (5.8m)			
IMPRINT	TAPE	WIDTH	PART NUMBER
Black	White	1/2" (12mm)	212NYLBWPX†
		3/4" (18mm)	218NYLBWPX†
		1" (24mm)	224NYLBWPX†

It is recommended to cut nylon tape using scissors to prolong the life of your printer's built-in cutter.

MAGNETIC TAPE - 4.9ft (1.5m)			
IMPRINT	TAPE	WIDTH	PART NUMBER
Black	White	1/2" (12mm)	212MTBWPX-4.9
		3/4" (18mm)	218MTBWPX-4.9
		1" (24mm)	224MTBWPX-4.9
	Yellow	1/2" (12mm)	212MTBYPX-4.9
		3/4" (18mm)	218MTBYPX-4.9
		1" (24mm)	224MTBYPX-4.9
	Red	1/2" (12mm)	212MTBRPX-4.9
		3/4" (18mm)	218MTBRPX-4.9
		1" (24mm)	224MTBRPX-4.9
	Blue	1/2" (12mm)	212MTBBPX-4.9
		3/4" (18mm)	218MTBBPX-4.9
		1" (24mm)	224MTBBPX-4.9
	Green	1/2" (12mm)	212MTBGPX-4.9
		3/4" (18mm)	218MTBGPX-4.9
		1" (24mm)	224MTBGPX-4.9

It is recommended to cut magnetic tape using scissors to prolong the life of your printer's built-in cutter.

HEAT SHRINK TUBE - 98in (2.4m)					
IMPRINT	TAPE	NOMINAL DIAMETER	AWG	SHRINK RATIO	PART NUMBER
Black	Red	3/16" (4mm)	8-12	2:1	205STBRPX
		1/2" (12mm)	2-8	2:1	211STBRPX
	Yellow	1/8" (3mm)	16-22	3:1	203YLBYPX
		3/16" (4mm)	8-12	2:1	205STBYPX
		1/4" (6mm)	6-18	3:1	208B20BYPX**
		1/2" (12mm)	2-8	2:1	211STBYPX
	White	1/8" (3mm)	16-22	3:1	203YLBWPX
		3/16" (4mm)	8-12	2:1	205STBWPX
		1/4" (6mm)	6-18	3:1	208B20BWPX**
		3/8" (9mm) 90in/L	4-12	3:1	210STBWPX-90
		1/2" (12mm)	2-8	2:1	211STBWPX
		9/16" (14mm)	0-5	2:1	214STBWPX
	Blue	3/16" (4mm)	10-18	3:1	205YLBBPX
	Black	3/16" (4mm)	8-12	2:1	205STWBPX
		1/2" (12mm)	2-8	2:1	211STWBPX
White	Black	3/16" (4mm)	8-12	2:1	205STWBPX
		1/2" (12mm)	2-8	2:1	211STWBPX

Compliance Standards: UL Standard 224 (Related Temperature: 125° C, Rated Voltage: 300V, Flame Resistance Grade VW-1). It is recommended to cut heat shrink tube using scissors to prolong the life of your printer's built-in cutter.

DESIGNER COLLECTION	
Visit <a href="https://labelworks.epson.com/for-home/supplies.html">labelworks.epson.com/for-home/supplies.html</a> to view our Designer Collection	

\* INDICATES THAT SUPPLY IS ALSO AVAILABLE IN STANDARD CARTRIDGES  
\*\* INDICATES THAT SUPPLY IS ALSO AVAILABLE IN BULK ROLL (BULK ONLY COMPATIBLE WITH Z PRINTERS)  
† INDICATES THAT SUPPLY HAS SPLIT-BACK LINING



## GET IN TOUCH



**Phone**  
+1 800.458.3430  
M-F 8am-4pm CST



**Fax**  
+1 888.865.2235



**Email**  
shop@labelworks.epson.com



**Web**  
labelworks.epson.com



**Address**  
PO Box 309, 370 SMC Drive  
Somerset, WI 54025

## FOLLOW US



**EPSON®**